



08-200
DINA 600 CON PERNO
1 1/2" 12, HEX. 2 1/2"



08-210
DINA 600 CONTRA
TUERCA PLANA
1 1/2" 12, HEX. 2 1/4"



08-230
CHEVROLET CASTILLO
27/32" 20, HEX. 1 1/4"



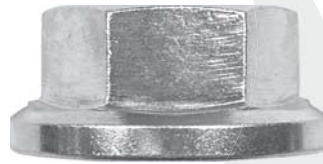
08-240
ESPIGA TOPAZ, CHEVROLET,
CARIBE, CORSAR, GOLF,
JETTA, RUEDA DELANTERA
20 mm X 1.50, HEX. 1 3/16"



08-250
ESPIGA TSURU
PLANA ALTA
22 mm X 1.0, HEX. 1 1/4"



08-260
ESPIGA RENAULT
INSERTO NYLON
16 mm X 1.50, HEX. 15/16"



08-270
ESPIGA TSURU, CAMPANA
22 mm X 1.50, HEX. 1 3/16"



08-272
FORD CONTOUR
CAMPANA CON CAÑON
22 mm X 1.50, HEX. 32 mm



08-280
ESPIGA CELEBRITY,
CUTLAS Y CENTURY
20 mm X 1.50, HEX. 1 3/16"



08-290
CODIGO K
22 mm X 1.50, HEX. 1 1/4"

SEGUROS DE CORONA PARA TUERCAS DE MANGO

08-310 CASTILLO FORD NAVISTAR
DINA 500 Y 531, 90 A 93
1 1/2" 18, HEX. 2 1/4"

08-320 MANGO FORD 5500 LBS.
1 1/4" 18, HEX. 2 1/4"

08-330 CASTILLO FORD NAVISTAR
DINA 500 Y 531, 94 A 97
1 1/2" 12, HEX. 2 1/4"

08-332 MANGO AUTOBUS MERCEDES BENZ
CASTILLO, ALTURA 1 1/4"
1 1/2" 18, HEX. 2 1/4"



08-400 SEGURO CORONA CARIBE

08-410 SEGURO CORONA FORD

08-420 SEGURO CORONA RAMBLER

08-425 SEGURO CORONA CHRYSLER CARAVAN

08-430 SEGURO CORONA TSURU

08-435 SEGURO CORONA NISSAN PICK UP

08-440 SEGURO CORONA D-600

08-450 SEGURO CORONA DINA CAMION

CHAVETAS PARA RUEDA



- 08-460** CHAVETA 3/32 X 1 1/2"
- 08-460-1** CHAVETA 1/8 X 1 1/2"
- 08-460-2** CHAVETA 1/8 X 2"
- 08-460-3** CHAVETA 1/8 X 2 1/2"
- 08-460-4** CHAVETA 1/8 X 3"
- 08-460-5** CHAVETA 5/32 X 1 1/2"
- 08-460-6** CHAVETA 5/32 X 2"

- 08-460-7** CHAVETA 5/32 X 2 1/2"
- 08-460-8** CHAVETA 5/32 X 3"
- 08-460-9** CHAVETA 3/16 X 1 1/2"
- 08-460-10** CHAVETA 3/16 X 2"
- 08-460-11** CHAVETA 3/16 X 2 1/2"
- 08-460-12** CHAVETA 3/16 X 3"



08-500
RONDANA DE NARIZ
DODGE AUTO



08-502
RONDANA DE NARIZ
CHEVY/MONZA



08-505
RONDANA DE NARIZ
DATSUN



08-510
RONDANA DE NARIZ
CHEVROLET AUTO



08-515
RONDANA DE NARIZ
RAMBLER



08-520
RONDANA DE NARIZ
V.W. SEDAN



08-525
RONDANA DE NARIZ
V.W. COMBI



08-530
RONDANA DE NARIZ
CHEVROLET CAMIONETA



08-535
RONDANA DE NARIZ
FORD CAMIONETA



08-540
RONDANA
DE NARIZ
DINA REDONDA



08-545
RONDANA
DE NARIZ
DINA CUADRADA



08-550

RONDANA DE NARIZ
DINA PLANA



08-555

RONDANA DE NARIZ
DODGE 600



08-560

RONDANA DE PERKINS



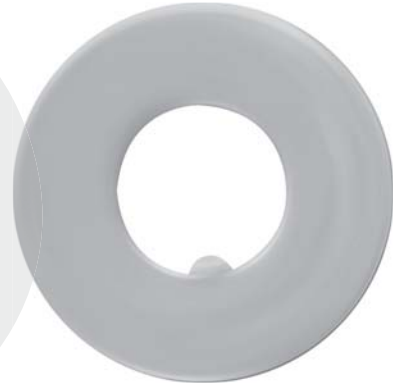
08-565

RONDANA DE NARIZ
FORD AUTOS



08-570

RONDANA FORD
F-350 (MICROBUS)



08-575

RONDANA DE NARIZ
DODGE CAMION



08-580

RONDANA GRANDE
SIN NARIZ



08-585

RONDANA F-150



08-590

RONDANA DE NARIZ
PARA MERCEDEZ BENZ

RONDANAS DE NARIZ



08-595
RONDANA DE NARIZ
PARA INTERNACIONAL



08-600
RONDANA DE NARIZ
PICK-UP NISSAN



08-601
RONDANA
EJE TRASERO
TSURU II



08-605
RONDANA DODGE
PANEL D-150



08-615
RONDANA DE NARIZ
CHEVROLET CAMIONETA C-10



08-610
RONDANA DE NARIZ
KENWORTH

10-146
RESPALDO DE TUERCA
CORONA P/CAJAS PIPAS,
VOLTEOS Y PLATAFORMAS
FRUEHAUF 3 1/2"



08-620
RONDANA NARIZ
CHEVROLET
CAMIONETA C-30



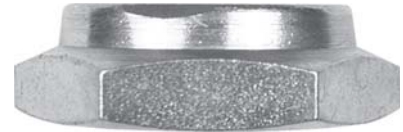
TUERCAS DE PIÑON



09-010 FORD F-100 AUTOS PRESION
3/4" 16, HEX. 1 1/8"

09-020 FORD CAMIONETA
AMERICANA PRESION
3/4" 20, HEX. 1 1/8"

09-040 FORD F-300 PRESION
7/8" 14, HEX. 1 1/4"



09-050 DODGE D-100, D-300 PRESION
7/8" 16, HEX. 1 1/4"

09-060 CAJA AMERICANA PRESION
7/8" 16, HEX. 1 1/8"

09-190 DINA 631 PRESION
1 1/4" 12, HEX. 1 3/4"

09-191 PIÑON CAMION DINA 631, PRESION
1 1/4" 12, HEX. 2"

09-192 FLECHA DESLIZABLE, CAMION DINA 631
PRESION, 1 1/4" 18, HEX. 2"

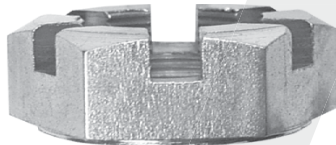


09-030 FORD CAMIONETA
AMERICANA CAMPANA
3/4" 20, HEX. 1 1/8"

09-130 DINA 531 CAMPANA
1 1/8" 18, HEX. 1 1/2"

09-180 DINA 631 CAMPANA
1 1/4" 12, HEX. 1 5/8"

09-200 DINA 631 CAMPANA
1 1/4" 18, HEX. 1 5/8"



09-068 CHEVROLET DOBLE RODADO
CASTILLO, PIÑON Y MANGO
7/8" 20, HEX. 1 1/4"

09-070 FORD F-600 CASTILLO
1" 20, HEX. 1 1/2"

09-160 DINA 631 CASTILLO
1 1/4" 12, HEX. 1 3/4"



09-202 PIÑON F-600 Y CAJA PICK UP
CHEVROLET AMERICANA
CAMPANA, INSERTO NYLON
1" 20, HEX. 1 1/2"

09-203 PIÑON DINA 531
CAMPANA, INSERTO NYLON
1 1/8" 18, HEX. 1 5/8"

09-205 CAMPANA, INSERTO NYLON
NAVISTAR
1 1/4" 18, HEX. 1 13/16"

09-206 CAMPANA, INSERTO NYLON
1 1/4" 12, HEX. 1 13/16"



09-080 FORD F-600 INSERTO NYLON
1" 20, HEX. 1 1/2"

09-120 DINA 531 INSERTO NYLON
1 1/8" 18, HEX. 1 5/8"

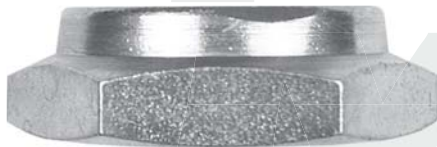
09-140 PRESION
1 1/8" 18, HEX. 1 5/8"

09-150 INSERTO NYLON
1 1/4" 12, HEX. 2"

09-170 DINA 631 INSERTO NYLON
1 1/4" 12, HEX. 1 3/4"

09-210 INSERTO NYLON
1 3/8" 12, HEX. 2"

TUERCAS PARA CAJA DE VELOCIDADES



09-221 A FLECHA SALIDA
CAJA FULLER, PRESION
1 3/8" 12, HEX. 2"

09-221 FLECHA DESLIZABLE
CAJA FULLER, PRESION
1 3/8" 18, HEX. 2"



09-236 FLECHA SALIDA
CAJA FULLER, CAMPANA
1 3/8" 12, HEX. 1 3/4"

09-238 FLECHA DESLIZABLE
CAJA FULLER, CAMPANA
1 3/8" 18, HEX. 1 3/4"

09-240 CAMPANA
1 1/2" 18, HEX. 1 7/8"

09-270 CAMPANA
1 3/4" 12, HEX. 2 1/4"

09-300 CAMPANA
1 3/4" 16, HEX. 2 1/4"

09-301 FLECHA SALIDA TRAILER AMERICANO,
CAMPANA
1 7/8" 12, HEX. 2 1/4"

09-302 FLECHA DESLIZABLE
CAMION AMERICANO
CAMPANA
1 7/8" 16, HEX. 2 1/4"

09-303 FLECHA SALIDA Y PIÑON
TRAILER AMERICANO, CAMPANA
2" 12, HEX. 2 1/2"

09-304 FLECHA DESLIZABLE Y CAJA
TRAILER AMERICANO, CAMPANA
2" 16, HEX. 2 1/2"

TUERCAS PARA CAJA DE VELOCIDADES



09-250 CAJA FULLER DINA 600, INSERTO NYLON
1 1/2" 18, HEX. 2 1/4"

09-252 FLECHA SALIDA CAJA TRAILER AMERICANO
INSERTO NYLON
1 5/8" 12, HEX. 2 1/2"

09-254 PIÑON EJE EATON 44, 000 LIBRAS,
INSERTO NYLON
1 5/8" 18, HEX. 2 1/2"

09-260 YUGO FASE I, INSERTO NYLON
1 3/4" 12, HEX. 2 3/4"

09-290 YUGO FASE II, CAJA VELOCIDADES AUTOBUS
INSERTO NYLON
1 3/4" 16, HEX. 2 3/4"

09-294 FLECHA SALIDA CAJA TRAILER AMERICANO,
INSERTO NYLON
1 7/8" 12, HEX. 2 3/4"

09-296 FLECHA DESLIZABLE CAJA TRAILER AMERICANO,
INSERTO NYLON
1 7/8" 16, HEX. 2 3/4"

09-320 CAJA AMERICANA
2" 12, HEX. 2 3/4"

09-350 CAJA FULLER, INSERTO NYLON
2" 16, HEX. 2 3/4"

09-278 PIÑON CASTILLO EJE EATON AMERICANO
1 5/8" 12, HEX. 2 1/2"

09-279 PIÑON CASTILLO EJE EATON
1 5/8" 18, HEX. 2 1/2"

09-280 PIÑON CASTILLO BAJA ALTURA
1 3/4" 12, HEX. 2 3/4"

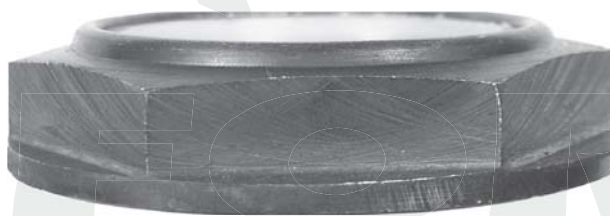
09-310 PIÑON CASTILLO BAJA ALTURA
1 3/4" 16, HEX. 2 3/4"

09-312 PIÑON CASTILLO YUGO FASE I
TRAILER AMERICANO
1 7/8" 12, HEX. 2 3/4"

09-314 PIÑON CASTILLO FLECHA DESLIZABLE
YUGO FASE II TRAILER AMERICANO
1 7/8" 16, HEX. 2 3/4"

09-330 PIÑON CASTILLO ALTURA
2" 12, HEX. 2 3/4"

09-340 PIÑON CASTILLO ALTURA
2" 16, HEX. 2 3/4"



09-351 CAJA FULLER, CAMPANA
INSERTO NYLON
2" 16, HEX. 2 3/4"

09-352 PIÑON Y FLECHA,
TRAILER AMERICANO
CAMPANA, INSERTO NYLON
2" 12, HEX. 2 3/4"

09-355 FLECHA SALIDA CAJA FULLER
CAMPANA, INSERTO NYLON
1 3/8" 12, HEX. 1 3/4"

09-360 FLECHA DESLIZABLE CAJA FULLER
CAMPANA, INSERTO NYLON
1 3/8" 18, HEX. 1 3/4"

09-365 FLECHA SALIDA CAJA SPICER
CAMPANA, INSERTO NYLON
1 1/2" 12, HEX. 1 7/8"

09-370 FLECHA DESLIZABLE CAJA SPICER
CAMPANA, INSERTO NYLON
1 1/2" 18, HEX. 1 7/8"

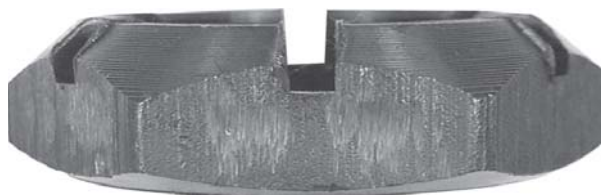
09-375 FLECHA SALIDA CAJA, YUGOS Y
PIÑONES TRAILER FASE I
CAMPANA, INSERTO NYLON
1 3/4" 12, HEX. 2 1/4"

09-380 FLECHA DESLIZABLE YUGOS Y
PIÑONES TRAILER FASE II
CAMPANA, INSERTO NYLON
1 3/4" 16, HEX. 2 1/4"

09-385 FLECHA SALIDA CAJA Y PIÑON
TRAILER AMERICANO
CAMPANA, INSERTO NYLON
1 7/8" 12, HEX. 2 1/4"

09-390 FLECHA DESLIZABLE
CAMION AMERICANO
CAMPANA, INSERTO NYLON
1 7/8" 16, HEX. 2 1/4"

TUERCAS PARA CAJA DE VELOCIDADES



09-250 CAJA FULLER DINA 600, INSERTO NYLON
1 1/2" 18, HEX. 2 1/4"

09-252 FLECHA SALIDA CAJA TRAILER AMERICANO
INSERTO NYLON
1 5/8" 12, HEX. 2 1/2"

09-254 PIÑON EJE EATON 44, 000 LIBRAS,
INSERTO NYLON
1 5/8" 18, HEX. 2 1/2"

09-260 YUGO FASE I, INSERTO NYLON
1 3/4" 12, HEX. 2 3/4"

09-290 YUGO FASE II, CAJA VELOCIDADES AUTOBUS
INSERTO NYLON
1 3/4" 16, HEX. 2 3/4"

09-294 FLECHA SALIDA CAJA TRAILER AMERICANO,
INSERTO NYLON
1 7/8" 12, HEX. 2 3/4"

09-296 FLECHA DESLIZABLE CAJA TRAILER AMERICANO,
INSERTO NYLON
1 7/8" 16, HEX. 2 3/4"

09-320 CAJA AMERICANA
2" 12, HEX. 2 3/4"

09-350 CAJA FULLER, INSERTO NYLON
2" 16, HEX. 2 3/4"

09-278 PIÑON CASTILLO EJE EATON AMERICANO
1 5/8" 12, HEX. 2 1/2"

09-279 PIÑON CASTILLO EJE EATON
1 5/8" 18, HEX. 2 1/2"

09-280 PIÑON CASTILLO BAJA ALTURA
1 3/4" 12, HEX. 2 3/4"

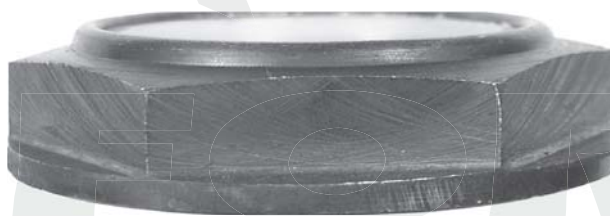
09-310 PIÑON CASTILLO BAJA ALTURA
1 3/4" 16, HEX. 2 3/4"

09-312 PIÑON CASTILLO YUGO FASE I
TRAILER AMERICANO
1 7/8" 12, HEX. 2 3/4"

09-314 PIÑON CASTILLO FLECHA DESLIZABLE
YUGO FASE II TRAILER AMERICANO
1 7/8" 16, HEX. 2 3/4"

09-330 PIÑON CASTILLO ALTURA
2" 12, HEX. 2 3/4"

09-340 PIÑON CASTILLO ALTURA
2" 16, HEX. 2 3/4"



09-351 CAJA FULLER, CAMPANA
INSERTO NYLON
2" 16, HEX. 2 3/4"

09-352 PIÑON Y FLECHA,
TRAILER AMERICANO
CAMPANA, INSERTO NYLON
2" 12, HEX. 2 3/4"

09-355 FLECHA SALIDA CAJA FULLER
CAMPANA, INSERTO NYLON
1 3/8" 12, HEX. 1 3/4"

09-360 FLECHA DESLIZABLE CAJA FULLER
CAMPANA, INSERTO NYLON
1 3/8" 18, HEX. 1 3/4"

09-365 FLECHA SALIDA CAJA SPICER
CAMPANA, INSERTO NYLON
1 1/2" 12, HEX. 1 7/8"

09-370 FLECHA DESLIZABLE CAJA SPICER
CAMPANA, INSERTO NYLON
1 1/2" 18, HEX. 1 7/8"

09-375 FLECHA SALIDA CAJA, YUGOS Y
PIÑONES TRAILER FASE I
CAMPANA, INSERTO NYLON
1 3/4" 12, HEX. 2 1/4"

09-380 FLECHA DESLIZABLE YUGOS Y
PIÑONES TRAILER FASE II
CAMPANA, INSERTO NYLON
1 3/4" 16, HEX. 2 1/4"

09-385 FLECHA SALIDA CAJA Y PIÑON
TRAILER AMERICANO
CAMPANA, INSERTO NYLON
1 7/8" 12, HEX. 2 1/4"

09-390 FLECHA DESLIZABLE
CAMION AMERICANO
CAMPANA, INSERTO NYLON
1 7/8" 16, HEX. 2 1/4"